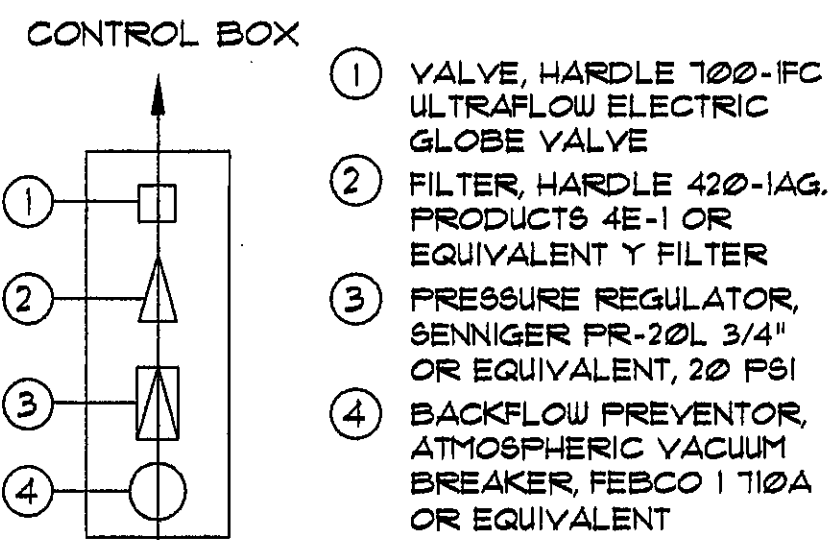
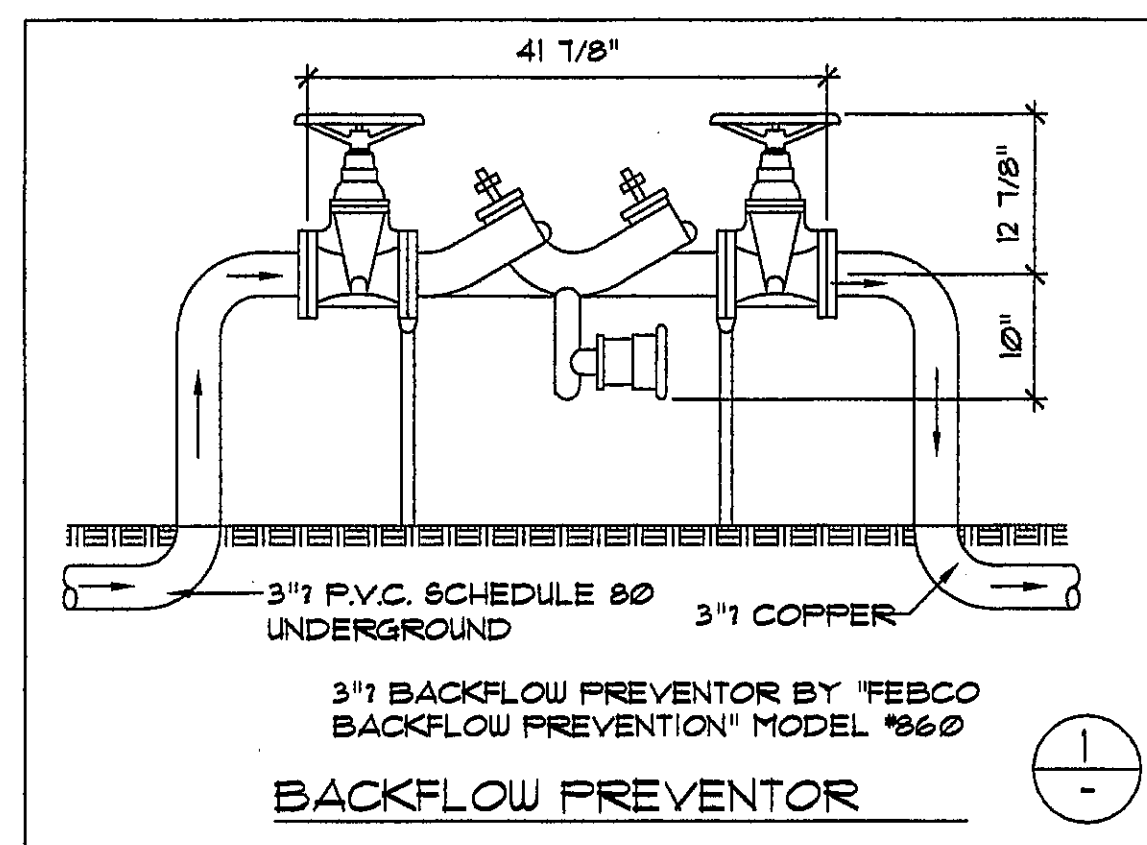


LANDSCAPING NOTES

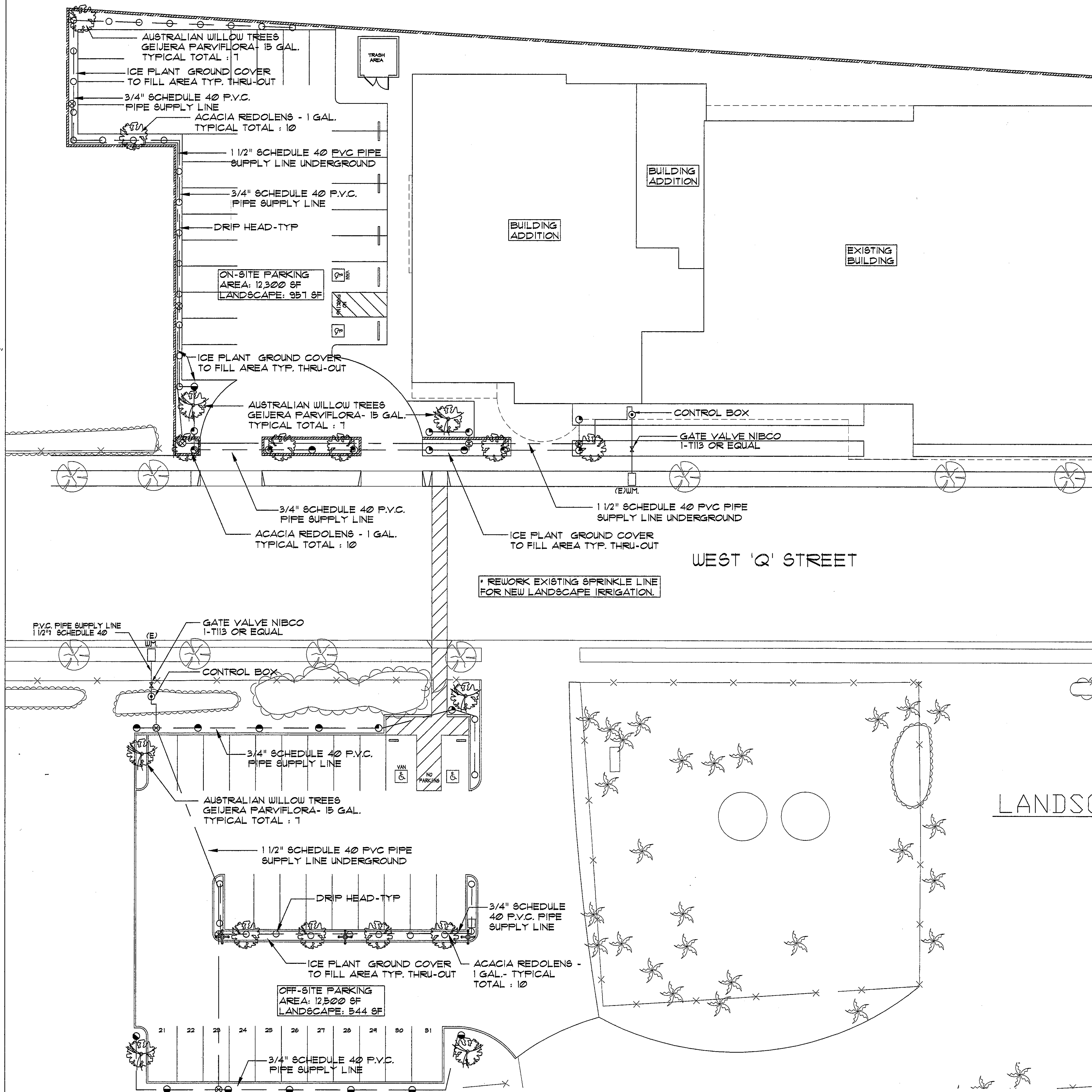
1. THE PLANTING PLAN IS DIAGRAMMATIC. PLANT LOCATIONS ARE APPROXIMATE. PLANT SYMBOLS TAKE PRECEDENCE OVER PLANT QUANTITIES SPECIFIED. NOTIFY THE OWNER'S REPRESENTATIVE OF DISCREPANCIES PRIOR TO STARTING WORK.
2. PLANT QUANTITIES GIVEN IN THE PLAN ARE APPROXIMATE AND FOR THE CONVENIENCE OF THE OWNER ONLY.
3. PRIOR TO PLANTING, CONSTRUCTION ADJACENT TO PLANTING AREAS SHALL BE COMPLETE AND IRRIGATION SYSTEMS INSTALLED AND OPERATIONAL.
4. PLANT MATERIAL IN OR NEAR PAVING AND WALLS MAY REQUIRE INSTALLATION PRIOR TO CONSTRUCTION. COORDINATE THIS WORK THROUGH THE GENERAL CONTRACTOR.
5. TAKE SOIL SAMPLES AND SUBMIT WRITTEN REPORT TO LANDSCAPE ARCHITECT PRIOR TO THE START OF SOIL PREPARATION PER THE SPECIFICATIONS.
6. CONTRACTOR SHALL PLANT TREES AT STALL LINES WHERE THERE MAY BE A CONFLICT WITH PARKED CARS.
7. THREE WEEKS PRIOR TO DELIVERY TO SITE, SUBMIT PHOTOS OF NURSERY STOCK TREES TO LANDSCAPE ARCHITECT FOR REVIEW AND APPROVAL.
8. KEEP SHRUBS AND TREES A MINIMUM OF 3'-0" (OR AS INDICATED ON PLAN) FROM BACK OF PARKING CURBS TO ALLOW FOR CAR OVERHANG.
9. LANDSCAPE CONTRACTOR SHALL PERFORM A PERCOLATION CHECK FOR ALL TREE PLANTING PITS WHICH APPEAR TO HAVE A POTENTIAL DRAINAGE PROBLEM. THE TREE PLANTING PITS SHALL BE FILLED WITH WATER AND RECHECKED AFTER A 24-HOUR PERIOD. IF THERE IS NO SIGNIFICANT CHANGE IN THE WATER LEVEL, IT IS THE RESPONSIBILITY OF THE LANDSCAPE CONTRACTOR TO PROVIDE FOR ADEQUATE DRAINAGE PRIOR TO PLANTING. THE CONTRACTOR SHALL NOTIFY THE LANDSCAPE ARCHITECT IMMEDIATELY UPON COMPLETION OF THE PERCOLATION TESTS IN ORDER TO DISCUSS APPROPRIATE DRAINAGE DETAILS.
10. REFER TO SPECIFICATIONS AND DETAILS FOR ADDITIONAL INFORMATION.
11. LANDSCAPE CONTRACTOR SHALL REPAIR EXISTING LANDSCAPE AREAS WHICH ARE DAMAGED DURING CONSTRUCTION PHASE. ALL DAMAGED MATERIAL SHALL BE REPLACED WITH MATCHING MATERIAL OF SIMILAR SIZE AND CALIBER. RESPONSIBILITY OF THE LANDSCAPE CONTRACTOR TO PROVIDE FOR ADEQUATE DRAINAGE PRIOR TO PLANTING.

LEGEND

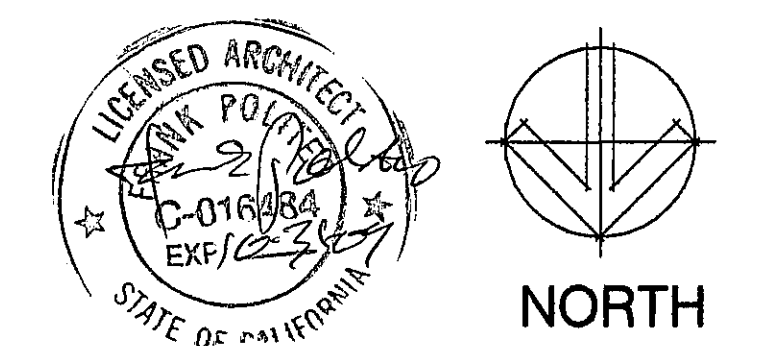
SYM.	DESCRIPTION	PSI	GPM	PART NO.	MFR.
☐	RP BACKFLOW PREVENTER			825Y-1 1/4"	FEBCO
⊕	REMOTE CONTROL VALVE			100-1 1/2"	HARDIE
⊙	12" P/U SPRAY HEAD, 1812	30	121	15 55T	RAINBIRD
⊙	12" P/U SPRAY HEAD, 1812	30	039	10 Q	RAINBIRD
⊙	6" P/U SPRAY HEAD, 1806	30	121	15 55T	RAINBIRD
⊗	WATER METER				
△	AUTOMATIC CONTROLLER			MC-4 PL	HARDIE
⊙	IRRIGATION CONTROL BOX				



IRRIGATION CONTROL BOX



LANDSCAPE PLAN
SCALE: 1/16"=1'-0"



FRANK POLITEO A.I.A.
DAL MO CHONG AND ASSOCIATES
ARCHITECTURE
1300 S BEACON ST. SUITE 225 SAN PEDRO CA 90731
TEL. (310) 831-3035 FAX (310) 831-6344

**PHASE 4 TEEN CENTER ADDITION TO:
WILMINGTON BOYS AND GIRLS CLUB**
1444 WEST Q. STREET WILMINGTON CA 90744

DATE 1/7/04	DRAWN BY:	REVISION:	SHT:
DATE 1/7/04	CHECKED BY: FP	REVISION:	A-04