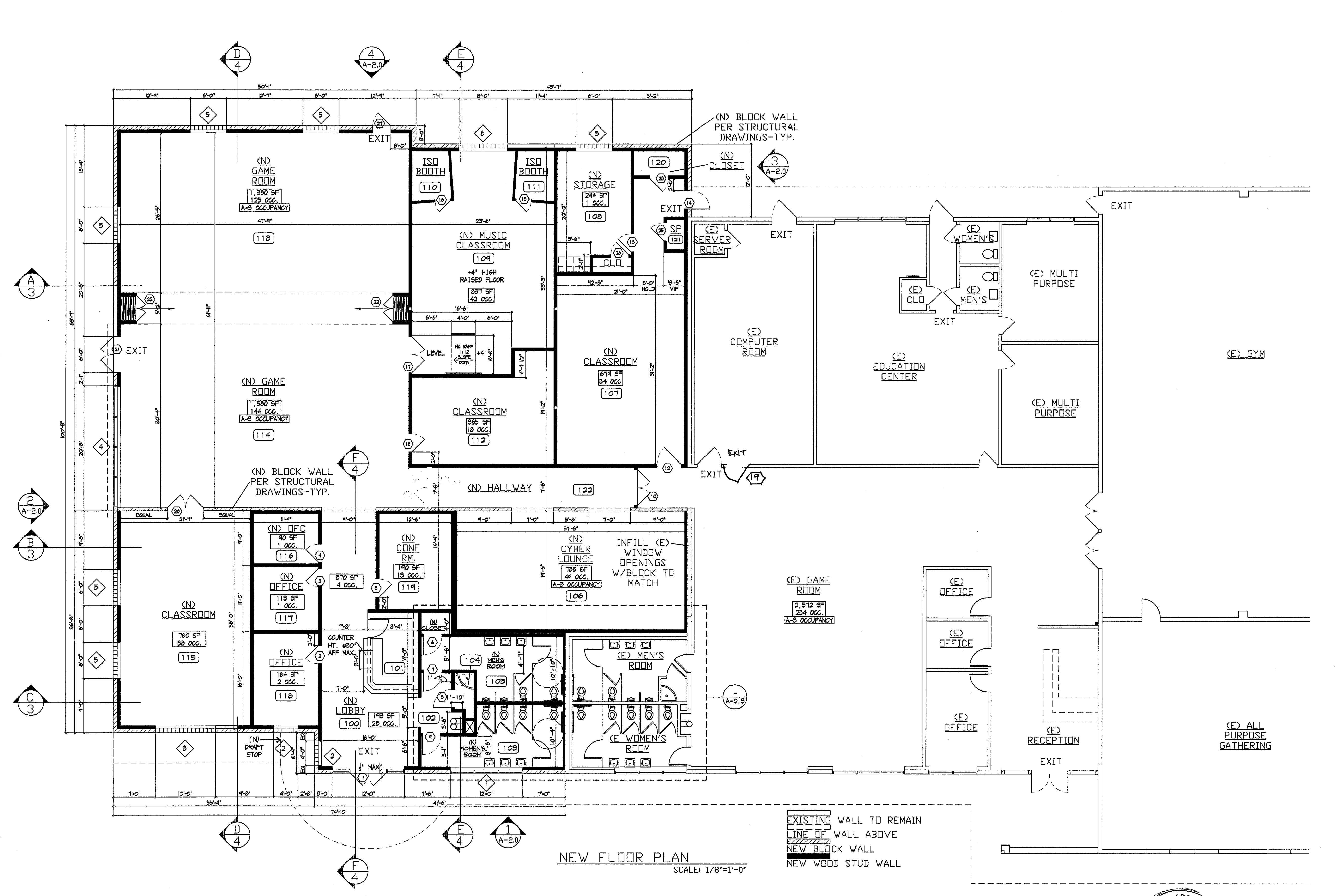


ROOM NO.	USE	OCCUPANCY GROUP	OCCUPANTS	OCCUPANT RATIO
100	LOBBY	B	28 OCCUPANTS	1 PER 7 SF
101	RECEPTION	B	4 OCCUPANTS	1 PER 100 SF
102	VESTIBULE	B	ACCESSORY USE	
103	WOMEN'S RESTROOM	B	ACCESSORY USE	
104	JANITOR CLOSET	B	ACCESSORY USE	
105	MEN'S RESTROOM	B	ACCESSORY USE	
106	CYBER LOUNGE	A-3	41 OCCUPANTS	1 PER 15 SF
107	CLASSROOM	B	34 OCCUPANTS	1 PER 20 SF
108	STORAGE	B	1 OCCUPANT	1 PER 300 SF
109	CLASSROOM	B	42 OCCUPANTS	1 PER 20 SF
110	ISO BOOTH	B	PART OF (107)	1 PER 20 SF
111	ISO BOOTH	B	PART OF (107)	1 PER 20 SF
112	CLASSROOM	B	18 OCCUPANTS	1 PER 20 SF
113	GAME ROOM	A-3	125 OCCUPANTS	1 PER 11 SF
114	GAME ROOM	A-3	144 OCCUPANTS	1 PER 11 SF
115	CLASSROOM	B	38 OCCUPANTS	1 PER 20 SF
116	OFFICE	B	1 OCCUPANT	1 PER 100 SF
117	OFFICE	B	1 OCCUPANT	1 PER 100 SF
118	OFFICE	B	2 OCCUPANTS	1 PER 100 SF
119	CONFERENCE ROOM	B	13 OCCUPANTS	1 PER 15 SF
120	CLOSET	B	ACCESSORY USE	
121	SPRINKLER CLOSET	B	ACCESSORY USE	
122	HALLWAY	B	3 OCCUPANTS	1 PER 100 SF

FINISH SCHEDULE				
ROOM FLOOR	WALLS	MAINS/COT	CEILING	
100	VGT FLOORING	PAINT	4" MOOD BASE	6YP BD/ SOFFIT/ SKYLIGHT
101	VGT FLOORING	PAINT	4" MOOD BASE	6YP BD/ SOFFIT/ SKYLIGHT
102	VGT FLOORING	PAINT	4" MOOD BASE	5/8" TYPE 'X' 6YP BD. @ MAX. HT.
103	CERAMIC TILE	CERAMIC TILE	12" HIGH MAINSCOT	6YP BD. LID
104	CERAMIC TILE	CERAMIC TILE	12" HIGH MAINSCOT	6YP BD. LID
105	CERAMIC TILE	CERAMIC TILE	12" HIGH MAINSCOT	6YP BD. LID
106	VGT FLOORING	PAINT	4" MOOD BASE	UNDERSIDE OF CONG. DECK/ TRUSSES
107	VGT FLOORING	PAINT	4" MOOD BASE	UNDERSIDE OF CONG. DECK/ TRUSSES
108	VGT FLOORING	PAINT	4" MOOD BASE	UNDERSIDE OF CONG. DECK/ TRUSSES
109	RAISED/ CARPET	PAINT	4" MOOD BASE	6YP BD/ SOFFIT/ GLASS SKYLIGHT
110	RAISED/ CARPET	PAINT	4" MOOD BASE	6YP BD. LID
111	RAISED/ CARPET	PAINT	4" MOOD BASE	6YP BD. LID
112	VGT FLOORING	PAINT	4" MOOD BASE	UNDERSIDE OF CONG. DECK/ TRUSSES
113	VGT FLOORING	PAINT	4" MOOD BASE	UNDERSIDE OF CONG. DECK/ TRUSSES
114	VGT FLOORING	PAINT	4" MOOD BASE	UNDERSIDE OF CONG. DECK/ TRUSSES
115	VGT FLOORING	PAINT	4" MOOD BASE	UNDERSIDE OF CONG. DECK/ TRUSSES
116	HARDWOOD	PAINT	4" MOOD BASE	UNDERSIDE OF CONG. DECK/ TRUSSES
117	HARDWOOD	PAINT	4" MOOD BASE	UNDERSIDE OF CONG. DECK/ TRUSSES
118	HARDWOOD	PAINT	4" MOOD BASE	UNDERSIDE OF CONG. DECK/ TRUSSES
119	HARDWOOD	PAINT	4" MOOD BASE	UNDERSIDE OF CONG. DECK/ TRUSSES
120	HARDWOOD	PAINT	4" MOOD BASE	UNDERSIDE OF CONG. DECK/ TRUSSES
121	CONG. FLOOR	PAINT	4" MOOD BASE	UNDERSIDE OF CONG. DECK/ TRUSSES

DOOR SCHEDULE					
SYM.	TYPE	WIDTH	HT.	REMARKS	HARDWARE
1	PAIR	6'-0"	7'-0"	ENTRY DOORS IN STOREFRONT FRAME- TRANSOM ABOVE	PANIC
2	SGL	3'-0"	7'-0"	TEMPERED GLASS INSERT- 10' X 18' H- FRAME TO MATCH	LEVER
3	SGL	3'-0"	7'-0"	TEMPERED GLASS INSERT- 10' X 18' H- FRAME TO MATCH	LEVER
4	SGL	3'-0"	7'-0"	TEMPERED GLASS INSERT- 10' X 18' H- FRAME TO MATCH	LEVER
5	SGL	3'-0"	7'-0"	TEMPERED GLASS INSERT- 10' X 18' H- FRAME TO MATCH	LEVER
6	SGL	3'-0"	7'-0"	TEMPERED GLASS INSERT- 10' X 18' H- FRAME TO MATCH	LEVER
7	SGL	3'-0"	7'-0"	TEMPERED GLASS INSERT- 10' X 18' H- FRAME TO MATCH	LEVER
8	SGL	3'-0"	7'-0"	TEMPERED GLASS INSERT- 10' X 18' H- FRAME TO MATCH	LEVER
9	SGL	3'-0"	7'-0"	TEMPERED GLASS INSERT- 10' X 18' H- FRAME TO MATCH	LEVER
10	PAIR	6'-0"	7'-0"	SELF CLOSING- FRAME TO MATCH EXISTING	LEVER
11	PAIR	6'-0"	7'-0"	SELF CLOSING- 1-HOUR RATED CONNECT FIRE LIFE SAFETY	PANIC
12	SGL	3'-0"	7'-0"	TEMPERED GLASS INSERT- 10' X 18' H- FRAME TO MATCH	LEVER
13	SGL	3'-0"	7'-0"	TEMPERED GLASS INSERT- 10' X 18' H- FRAME TO MATCH	LEVER
14	SGL	3'-0"	7'-0"	TEMPERED GLASS INSERT- 10' X 18' H- FRAME TO MATCH	LEVER
15	SGL	3'-0"	7'-0"	TEMPERED GLASS INSERT- 10' X 18' H- FRAME TO MATCH	LEVER
16	SGL	3'-0"	7'-0"	TEMPERED GLASS INSERT- 10' X 18' H- FRAME TO MATCH	LEVER
17	PAIR	6'-0"	7'-0"	TEMPERED GLASS INSERT- 10' X 18' H- FRAME TO MATCH	LEVER
18	SGL	3'-0"	7'-0"	TEMPERED GLASS INSERT- 10' X 18' H- FRAME TO MATCH	LEVER
19	SGL	3'-0"	7'-0"	TEMPERED GLASS INSERT- 10' X 18' H- FRAME TO MATCH	LEVER
20	PAIR	6'-0"	7'-0"	TEMPERED GLASS INSERT- 10' X 18' H- FRAME TO MATCH	LEVER
21	PAIR	6'-0"	7'-0"	TEMPERED GLASS INSERT- 10' X 18' H- FRAME TO MATCH	LEVER
22	FOLD	48"-6'15"	7'-0"	EXTERIOR LOCKSET AND HARDWARE- TEMPERED GLASS INSERT	PANIC
23	SGL	3'-0"	7'-0"	FOLDING PARTITION W/ PANIC HARDWARE DOOR & EXIT SIGN	PANIC
24	SGL	3'-0"	7'-0"	SOLID CORE- LOCKSET	LEVER
25	SGL	3'-0"	7'-0"	OMITTED	
26	SGL	3'-0"	7'-0"	LOCK SET- SPRINKLER RISER CLOSET- FRAME TO MATCH	LEVER
27	SGL	3'-0"	7'-0"	LATCH SET- JANITOR CLOSET- FRAME TO MATCH EXISTING	LEVER
28	SGL	3'-0"	7'-0"	EXTERIOR LOCKSET- ONE-HOUR RATED; SELF-CLOSING	PANIC

WINDOW SCHEDULE				
SYM.	WIDTH	HT.	LOCATION	TYPE
1	2'-4"	2'-4"	EXTERIOR	STOREFRONT FRAME TO MATCH EXISTING- VANDAL RESISTANT GLASS
2	4'-0"	5'-4"	EXTERIOR	8" GLASS BLOCK- PITTSBURGH CORNING THICKSET 60 LARR 24486
3	10'-0"	5'-4"	EXTERIOR	8" GLASS BLOCK- PITTSBURGH CORNING THICKSET 60 LARR 24486
4	5'-0"	VARIES	EXTERIOR	STOREFRONT FRAME TO MATCH EXISTING- VANDAL RESISTANT GLASS
5	6'-0"	5'-4"	EXTERIOR	8" GLASS BLOCK- PITTSBURGH CORNING THICKSET 60 LARR 24486
6	8'-0"	5'-4"	EXTERIOR	8" GLASS BLOCK- PITTSBURGH CORNING THICKSET 60 LARR 24486

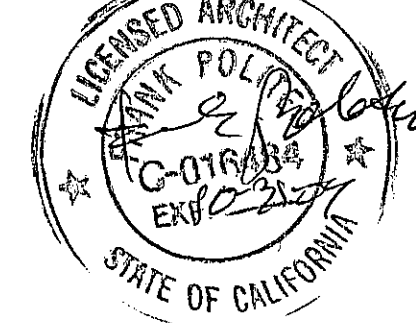


**BUILDING DEPT. NOTES**

- FIRE BLOCKINGS MUST BE PROVIDED IN ACCORDANCE WITH SECTION 706.2.1 IN THE FOLLOWING LOCATIONS:
  - IN CONCEALED SPACES OF STUD WALLS AND PARTITIONS, INCLUDING FURRED SPACES, AT THE CEILING AND FLOOR LEVEL.
  - IN CONCEALED SPACES OF STUD WALLS AND PARTITIONS, INCLUDING FURRED SPACES AT 10' INTERVALS ALONG THE LENGTH OF THE WALL.
  - AT ALL INTERCONNECTIONS BETWEEN CONCEALED VERTICAL AND HORIZONTAL SPACES SUCH AS OCCUR AT SOFFITS, DROP CEILING AND COVERED CEILING.
  - IN OPENINGS AROUND VENTS, PIPES, DUCTS, CHIMNEYS, FIREPLACES AND SIMILAR OPENINGS, WHICH AFFORD PASSAGE FOR FIRE AT CEILING AND FLOOR LEVEL, WITH NONCOMBUSTIBLE MATERIALS.
- DRAFT STOPS:
  - IN NON-RESIDENTIAL BUILDINGS, DRAFT STOPS MUST BE SO INSTALLED IN MOOD FRAME FLOOR CONSTRUCTION CONTAINING CONCEALED SPACE THAT THE AREA OF THE CONCEALED SPACE DOES NOT EXCEED 100 SF AND THE HORIZONTAL DIMENSION BETWEEN STOPS DOES NOT EXCEED 60 FEET.
  - IN NON-RESIDENTIAL BUILDINGS, DRAFT STOPS MUST BE SO INSTALLED IN THE ATTIC, HANGERS, OVERHANGS FORMED BY COMBUSTIBLE CONSTRUCTION THAT THE AREA OF THE CONCEALED SPACE DOES NOT EXCEED 3000 SF AND THE HORIZONTAL DIMENSION BETWEEN STOPS DOES NOT EXCEED 60 FEET.

- DRAFT STOPS:
  - DRAFT-STOPPING MATERIALS MUST NOT BE LESS THAN 1/2" GYPSUM BOARD, 3/8" PLYWOOD, 5/8" TYPE 2-M PARTICLE BOARD OR OTHER MATERIALS APPROVED BY THE BUILDING DEPT. DRAFT-STOPPING MUST BE ADEQUATELY SUPPORTED.
- COMBUSTIBLE MATERIALS FRAMED INTO A FIRE-RESISTIVE WALL MUST HAVE ONE HALF THE REQUIRED WALL THICKNESS AS END PROTECTION.
- PENETRATIONS IN WALLS REQUIRING PROTECTED OPENINGS MUST BE FIRE STOPPED WITH AN APPROVED MATERIAL IN ACCORDANCE WITH SECTION 704.6. SPACE BETWEEN PENETRATING MATERIALS MUST BE DESIGNED TO PREVENT THE MOVEMENT OF HOT FLAME OR GASES.
- EXIT SIGNS SHALL BE INTERNALLY OR EXTERNALLY ILLUMINATED. WHEN THE FACE OF AN EXIT SIGN IS ILLUMINATED FROM AN EXTERNAL SOURCE, IT SHALL HAVE AN INTENSITY OF NOT LESS THAN 5 FOOT CANDLES FROM EITHER OF TWO ELECTRIC LAMPS. INTERNALLY ILLUMINATED SIGNS SHALL PROVIDE EQUIVALENT LUMINANCE AND BE LISTED FOR THE PURPOSE.
- THE EXIT SIGNS SHALL ALSO BE CONNECTED TO AN EMERGENCY ELECTRICAL SYSTEM PROVIDED FROM STORAGE BATTERIES, UNIT EQUIPMENT OR AN ON-SITE GENERATOR SET, AND THE SYSTEM SHALL BE INSTALLED IN ACCORDANCE WITH THE ELECTRICAL CODE.
- THE POWER SUPPLY FOR MEANS OF EGRESS ILLUMINATION SHALL NORMALLY BE PROVIDED BY THE PREMISES OF ELECTRICAL SUPPLY. IN THE EVENT OF ITS FAILURE, ILLUMINATION SHALL BE AUTOMATICALLY PROVIDED FROM AN EMERGENCY SYSTEM FOR GROUP 1, DIVISIONS 1.1 AND 1.2 OCCUPANCIES AND FOR ALL OTHER OCCUPANCIES WHERE THE MEANS OF EGRESS SYSTEM SERVES AN OCCUPANT LOAD OF 100 OR MORE.

- EXIT DOORS SHALL BE OPENABLE FROM THE INSIDE WITHOUT THE USE OF A KEY, SPECIAL KNOWLEDGE OR EFFORT. FLUSH BOLTS OR SURFACE BOLTS ARE PROHIBITED. \*APPLIES ALSO TO EXIT GATES\*. THE UNLATCHING OF ANY LEAF SHALL NOT REQUIRE MORE THAN ONE OPERATION.
- POST A SIGN ADJACENT TO THE REQUIRED MAIN EXIT DOOR WITH 1" LETTERING STATING: \*THIS DOOR MUST REMAIN UNLOCKED DURING BUSINESS HOURS.; MAIN EXIT ONLY.
- THE CONSTRUCTION SHALL NOT RESTRICT A 5' CLEAR AND UNOBSTRUCTED ACCESS TO ANY WATER OR POWER DISTRIBUTION FACILITIES (POWER POLES, FULL-BOXES, TRANSFORMERS, VALVES, PUMPS, VALVES, METERS, APPURTENANCES, ETC.) OR TO THE LOCATION OF THE HOOK-UP. THE CONSTRUCTION SHALL NOT BE WITHIN 10' OF ANY POWER LINES- WHETHER OR NOT THE LINES ARE LOCATED ON THE PROPERTY. FAILURE TO COMPLY MAY CAUSE CONSTRUCTION DELAYS AND/ OR ADDITIONAL EXPENSES.
- PROVIDE ANTI-GRAFFITI FINISH AT THE FIRST 4', MEASURED FROM GRADE, AT THE EXTERIOR WALLS AND DOORS. GRAFFITI MELT BY GENESIS COATINGS. LARR# 25042
- EXIT PATH SHALL BE IDENTIFIED BY EXIT SIGNS CONFORMING TO SECTION 1009.2.8. EXIT SIGNS SHALL BE READILY VISIBLE FROM ANY DIRECTION OF APPROACH. EXIT SIGNS SHALL BE LOCATED AS NECESSARY TO CLEARLY INDICATE THE DIRECTION OF EGRESS TRAVEL. NO POINT SHALL BE MORE THAN 100 FEET FROM THE NEAREST VISIBLE SIGN.



**NORTH**

**FRANK POLITEO A.I.A.**  
**DAL MO CHONG AND ASSOCIATES**  
 ARCHITECTURE 1300 S BEACON ST. SUITE 225 SAN PEDRO CA 90731  
 TEL. (310) 831-3035 FAX (310) 831-6344

**PHASE 4 TEEN CENTER ADDITION TO:  
 WILMINGTON BOYS AND GIRLS CLUB**  
 1444 WEST Q. STREET WILMINGTON CA 90744

DATE 3/23/07	DRAWN BY: JAS	REVISION:	<b>A-10</b>
DATE 3/23/07	CHECKED BY: FP	REVISION:	